



**DURHAM CATHOLIC
DISTRICT SCHOOL BOARD**
Learning and Living in Faith

T20-32 Window Replacement Father Leo J. Austin Catholic School
ADDENDUM NO. 1

Issued by: Purchasing Services
Durham Catholic District School Board
652 Rossland Road West
Oshawa, Ontario L1J 8M7

This addendum will form a part of the bid documents for the above noted Bid and shall be read in conjunction herewith. This addendum will take precedence over all requirements of the original bid documents and any addenda issued previously.

Bidders shall acknowledge receipt of this addendum with their electronic bid submission on the declaration page in the bidding system

May 14, 2021

This Addendum forms part of the Tender Documents and amends the Tender Documents as described below.

1. **ARCHITECTURAL SPECIFICATIONS, PROJECT MANUAL VOLUME 1**

1.1 **DIVISION 08 - OPENINGS**

.1 **Section 08 51 13 - Aluminum Windows**

.1 Refer to Subsection 2.5, Fire-rated Aluminum Windows, and add new paragraph 2.5.6. as follows:

“.6 GPX-W-60R Architectural Series frames with SuperLite II-XL 60 in insulated glazing units by Safti First is an acceptable equivalent. Frames shall be for exterior application, 64mm wide by 127mm deep, clear anodized aluminum finished. Provide 25mm frame extensions on interior exposed frames at window type W1-X, to conform to detail 3/A4. System shall conform to these specifications and the project drawings.”

2. **ARCHITECTURAL DRAWINGS**

2.1 **DRAWING A3 - ELEVATIONS AND WINDOW TYPES**

.1 Refer to 14/A3, Window Types, and revise window types W1-X and W3-X, the 1 hour rated windows, in accordance with revised details on attached detail drawing ADD-01. Details are revised to reflect 50mm wide frame thickness; dimensions will be revised at a later date if 64mm wide frames are used.

.2 Revise 13/A3, Partial North Elevation at East Courtyard, to show revised window type W1-X as per detail 2/ADD1 on attached detail ADD-01.

.3 Revise 12/A3, Partial South Elevation at East Courtyard, to show revised window type W3-X as per detail 3/ADD1 on attached detail ADD-01.

2.2 **DRAWING A4 - WINDOW DETAILS**

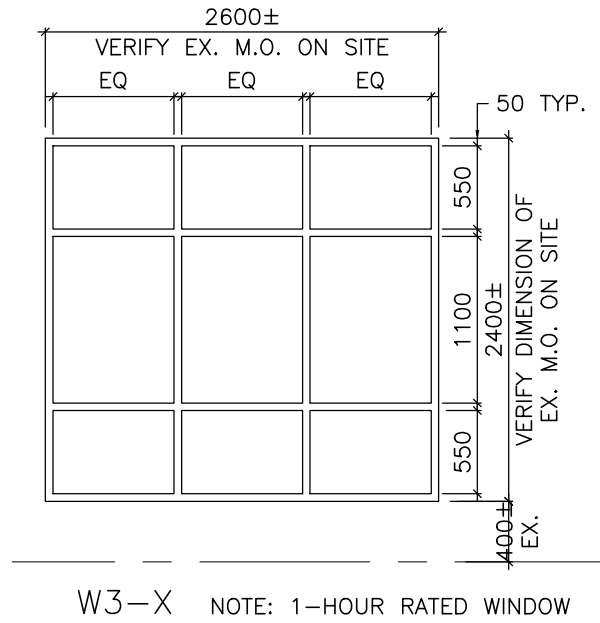
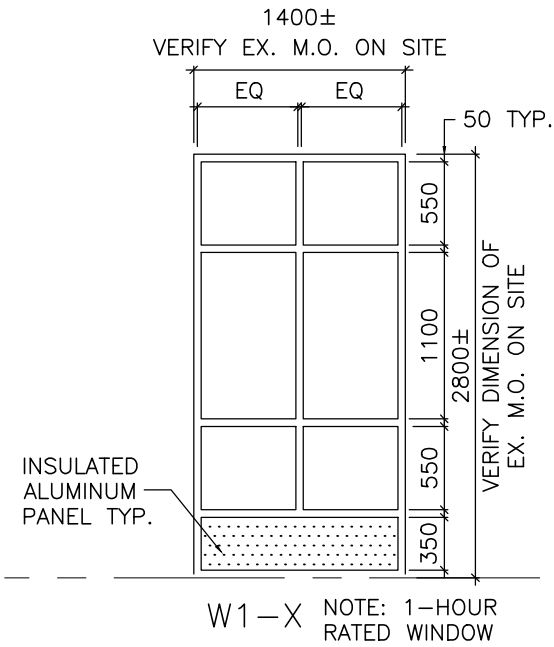
.1 Revise the scale indicated below the titles of each detail 1/A4 through 14/A4 to read, “N.T.S.”; these details were not incorporated into the drawing to scale.

.2 Revise the title of detail 2/A4 to replace the word “sill” with “head”.

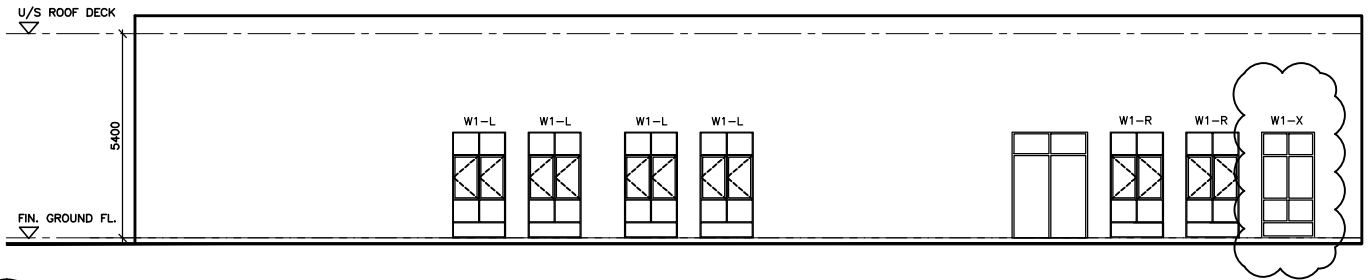
.3 Revise the title of detail 3/A4 to replace the word “head” with “sill”.

Attach:
Detail ADD-01

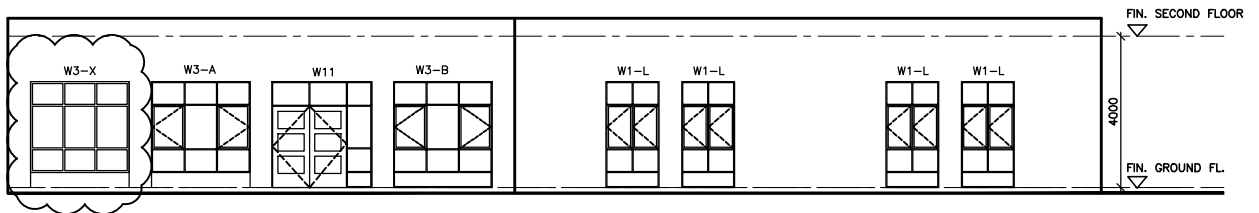
END OF ARCHITECTURAL ADDENDUM NO. 1



1 W1-X AND W3-X WINDOW TYPES
ADD1 1:50 (REFERENCE - WINDOW TYPES ON 14/A3)



2 PARTIAL NORTH ELEVATION AT EAST COURTYARD
ADD1 1:200



3 PARTIAL SOUTH ELEVATION AT EAST COURTYARD
ADD1 1:200

<p>FATHER LEO J. AUSTIN CATHOLIC SECONDARY SCHOOL WINDOW REPLACEMENT 2021 DURHAM CATHOLIC DISTRICT SCHOOL BOARD</p> <p>WINDOW TYPE W1-X AND W3-X</p>	<p>SCALE AS NOTED</p>	<p>DWG. NO. ADD-01</p>
<p>MOFFET & DUNCAN ARCHITECTS INC. 5052 DUNDAS ST. WEST TORONTO, ONT. M9A 1B9 TELEPHONE (416)-239-2775</p>	<p>JOB # 2142</p>	