

KAWARTHA PINE RIDGE DISTRICT SCHOOL BOARD
PUR24-069-ITT
Grafton Public School Classroom Upgrades

ADDENDUM NO. 1

This addendum shall form an integral part of the bid documents for the above noted Bid and shall be read in conjunction therewith. This addendum shall, however, take precedence over all requirements as it pertains to the particular and specific items noted below.

ADDITIONAL INFORMATION

Add: Addendum No. 1, Project No. 24006, prepared by Barry Bryan Associates (8 pages)

END OF ADDENDUM NO. 1



**BARRY BRYAN
ASSOCIATES**

Architects
Engineers
Project Managers

Transmittal

To: Kawartha Pine Ridge District School Board **Project No.:** 24006
Address: 1994 Fisher Dr, Peterborough **Date:** April 4, 2024
ON K9J 7A1
Attention: Barry Gillan
Project Name: Reconfiguration of Three (3) Open Concept Classrooms at Grafton PS

For your:	<input type="checkbox"/>	Approval	Via:	<input type="checkbox"/>	Mail
	<input type="checkbox"/>	Distribution		<input type="checkbox"/>	Courier
	<input checked="" type="checkbox"/>	Information and use		<input type="checkbox"/>	By hand
	<input type="checkbox"/>	Review and comment		<input type="checkbox"/>	To be picked up
Action taken:	<input type="checkbox"/>	Reviewed		<input type="checkbox"/>	Fax
	<input type="checkbox"/>	Reviewed as noted		<input checked="" type="checkbox"/>	E-mail
	<input type="checkbox"/>	Revise and resubmit			
	<input type="checkbox"/>	Not reviewed			

Qty.:	Drawing No.:	Issue No.:	Revision No.:	Description:
1	Copy	-	-	Addendum No. 1 dated April 4, 2024 (7 Pages)

cc: Robert Lee, Barry Bryan Associates
Chris Maves, Barry Bryan Associates
Crystal Gardner, Barry Bryan Associates



250 Water Street,
Suite 201
Whitby, Ontario
Canada
L1N 0G5

Tele: 905-666-5252
Fax: 905-666-5256
Email: bba@bba-archeng.com
www.bba-archeng.com

Ali Lueth



**BARRY BRYAN
ASSOCIATES**

Architects
Engineers
Project Managers

Project No.: 24006
Date: April 4, 2024
Tender No.: PUR24-069-ITT
Project: **RECONFIGURATION OF THREE (3) OPEN
CONCEPT CLASSROOMS AT GRAFTON PS
Kawartha Pine Ridge District School Board**

The following information supplements and/or supersedes the bid documents issued on March 26, 2024

This Addendum forms part of the contract documents and is to be read, interpreted, and coordinated with all other parts. The cost of all contained herein is to be included in the contract sum. The following revisions supersede the information contained in the original drawings and specifications issued for the above-named project to the extent referenced and shall become part thereof. Acknowledge receipt of this Addendum by inserting its number and date on the Tender Form. Failure to do so may subject bidder to disqualification.

QUESTIONS AND ANSWERS

- 1.1 **Question:** Arch Dwg A801, details cabinet interiors as a melamine finish. Can architect provide a basis for pricing the melamine colour, i.e. white or hard rock maple?
- Answer:* Birch Veneer plywood for all cabinets interior and exterior.
- 1.2 **Question:** Arch Dwg A802, details cabinet interiors as a birch veneer plywood finish, can architect clarify, should these interiors (behind doors) also be a melamine finish as above?
- Answer:* Birch Veneer plywood for all cabinets interior and exterior.
- 1.3 **Question:** Arch Dwg A801, details cabinet exteriors as a Flat Cut Birch Veneer Plywood finish with a 6mm white birch edge, can architect verify the birch plywood as having a particleboard core Can architect verify the birch plywood as having a 'B' Grade White veneer face, with a 'C' Grade white veneer back?
- Answer:* Birch Veneer plywood for all cabinets interior and exterior.
- 1.4 **Question:** We have the P.Lam control panel face colour, can architect provide a dimensioned elevation and section view of the control panels?
- Answer:* Refer to the detail 5/A802 on the attached revised BBA drawing A802 Millwork Details dated April 4, 2024. Also see the attached Interspec cut sheet for reference.
- 1.5 **Question:** Cabinet locks CCL#0737, can architect indicate specifically which cabinets get locks Can architect clarify, does Finish Hardware Section 087110 provide the locksets for the thick 44mm SC doors on millwork cabinets for millworkers installation?



250 Water Street,
Suite 201
Whitby, Ontario
Canada
L1N 0G5

Tele: 905-666-5252

Fax: 905-666-5256

Email: bba@bba-archeng.com

www.bba-archeng.com

Form 6.1-3 Rev. #0 19-06-01
24006 Addendum No. 1.wpd

Answer: Refer to specification 064000 Architectural Woodwork. Provide locks on all new cabinet doors and drawers. All new teacher's closet (quantity 5) to receive the following hardware.

*3 EA Hinge BB1279-114 x 101-626
1 EA Storeroom Lockset 28x7G04x66x626
3 Wall Stop 236Wx626*

1.6 **Question:** **There are 2 colours on the specs for LVT. Is there a pattern or are certain rooms getting one colour, and the other rooms getting the other Specs calls for Tarkett Traditional 4 ½ inch with toe, Black - Can they confirm that it is 4 inch with toe?**

Answer: There is one colour only for the LVT flooring. Colour is Interface Stargazing Scorpio Silverlight A01716. It is a 4" toe.

DRAWINGS

1.7 Remove and replace Drawing A802 with revised BBA Drawing A802 Millwork Details, dated April 4, 2024.

End of Addendum No. 1

Barry Bryan Associates

Architects, Engineers, Project Managers



Crystal Gardner, OAA, M.Arch, B.A.S.

CG/al

Attachments: Interspec Information (4 Pages)
BBA Drawing A802 (1 Page)

I/We hereby acknowledge receipt of this Addendum.

Signature (signing officer of firm)

Position

Name of Firm

One copy of the addendum must be signed and returned with the completed tender, or the tender submitted shall be rejected.




Classroom Control with Total Flexibility

Interspec Systems control panels give you complete flexibility. We design, build, test and deliver your custom classroom solution, for new builds or retrofits.



www.interspecsystems.com



Every Classroom at Your Fingertips

ECONOMICAL & EFFICIENT

Panels are shipped directly to site, pre-configured and ready for installation. Compare the features included with every Interspec Classroom Control Panel at no additional cost (as required).

- All 120V or 347V back boxes
- All switch plate covers
- All receptacle cover plates
- All punch-outs for call switches, thermostats, or other devices
- Thermostat stand-offs
- Clock and fire alarm brackets
- All plastic laminate filler panels c/w any provisional cut-outs
- Speaker grill
- Shipping direct to site
- Installation guide

Save Money with This Smart, Simple Solution

Fixed conventional wall rough-ins can now cost upwards of \$180 per outlet. And with other millwork panels, you need to wait for other trades to finish first. Plus you are often stuck with what they house and how they look right now. Get smart and save with Interspec Classroom Control Panels instead. This is the simple, adaptable solution for all your power outlet, communication and classroom feature needs. Interspec's panels are also extremely cost-effective, for both new builds and easy retrofits. You can have it all with Interspec Systems.

Panel Key Features

All communication and electrical needs integrated in one neat, tidy, secure and flexible system.

1 FRAME

- 6063 T-5 aluminum alloy, anodized .0002 clear
- Blends with any style décor
- Durable, resistant to wear-and-tear
- 4" deep standard and 6" custom depth
- Surface mounted, semi- or fully-recessed

2 SPEAKER SCREEN

- Perforated metal
- Powder coated black
- Durable, protects any speakers use

3 COMPONENT PANEL

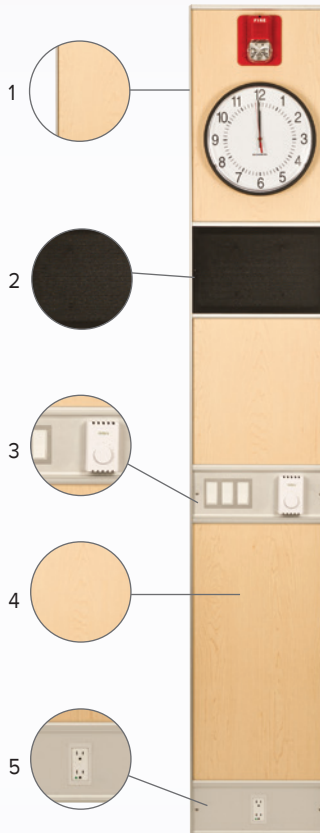
- 6063 T-5 aluminum alloy, anodized .0002 clear
- Smooth profiles for clean look
- Easy to clean
- No sharp corners for classroom safety

4 PLASTIC LAMINATE PANEL

- Strong, durable and tamper-resistant
- Removable for service access
- Thousands of colours in standard ranges
- Easy to replace with design changes over time

5 BOTTOM COMPONENT PANEL

- Flexible
- Accepts detailed components



Popular Laminate Colours



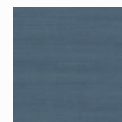
Natural Birch
FORMICA 7481



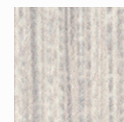
Hard Rock Maple
FORMICA 86992



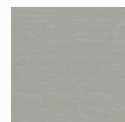
Oiled Walnut
FORMICA 5487



Tatami Denimu
ARBORITE P310



White Twill
FORMICA 9285



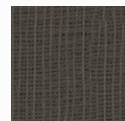
Brushed Aluminum
ARBORITE P623



Graphite Grafix
FORMICA 515



Wild Cherry
FORMICA 5904



Citadel Warp
FORMICA 5882

See more laminate options online



www.formica.com



www.arborite.com



www.pionite.com



www.wilsonart.com

Warranty Interspec Systems Limited shall and does warrant that all material and workmanship supplied will be of the quality and quantity specified. Any defects in material and workmanship made known to Interspec Systems Limited within one year of substantial completion shall be repaired or replaced with no additional expense to the owner. This warranty covers only those items supplied by Interspec Systems and does not include items supplied or installed by others.



Completely Flexible

Self-contained design neatly accommodates all wiring, services and devices. Adaptable over time for both technology and décor updates.



Easy to Install

Quickly and easily installed in 1 to 2 hours. Thoughtful design and routing minimize skilled trades costs.



Tamper-Resistant

Cabling and devices are securely housed. Locking components available for restricting access to telephones, thermostats and other equipment.



Low Maintenance

Extremely durable. Simple for custodial staff to keep clean. Canadian-made with a 100% recyclable aluminum frame.

ASK ABOUT OUR

Antimicrobial Classroom Control Panels



Protect against the spread of infectious bacteria* utilizing the power of antimicrobial copper

- Unmatched protection for high-touch surfaces
- Kills 99.9% of bacteria*, chemical-free
- Durable and easy to maintain
- Choice of coating finishes and laminate surfaces

*For more information visit aereustech.com

Laminate edges enhanced with solid antimicrobial copper



Your One Expert Resource

Interspec Systems specializes in the design and construction of various custom venue control panels, hospital headwalls, and healthcare accessories. Our sister company, **Alspec Industries**, supports architectural design, custom metalwork and fabrication. And our parent company, **Aereus Technologies**, provides antimicrobial coatings for highly effective and permanent protection, an ideal added option.



Planning + Design

No project is too small or complex for our hands-on team.



Manufacturing + Delivery

We build to the highest standards and complete projects on time.



Installation + Follow-up

Our job isn't complete until you have everything you need.

CERTIFIED FOR QUALITY ASSURANCE



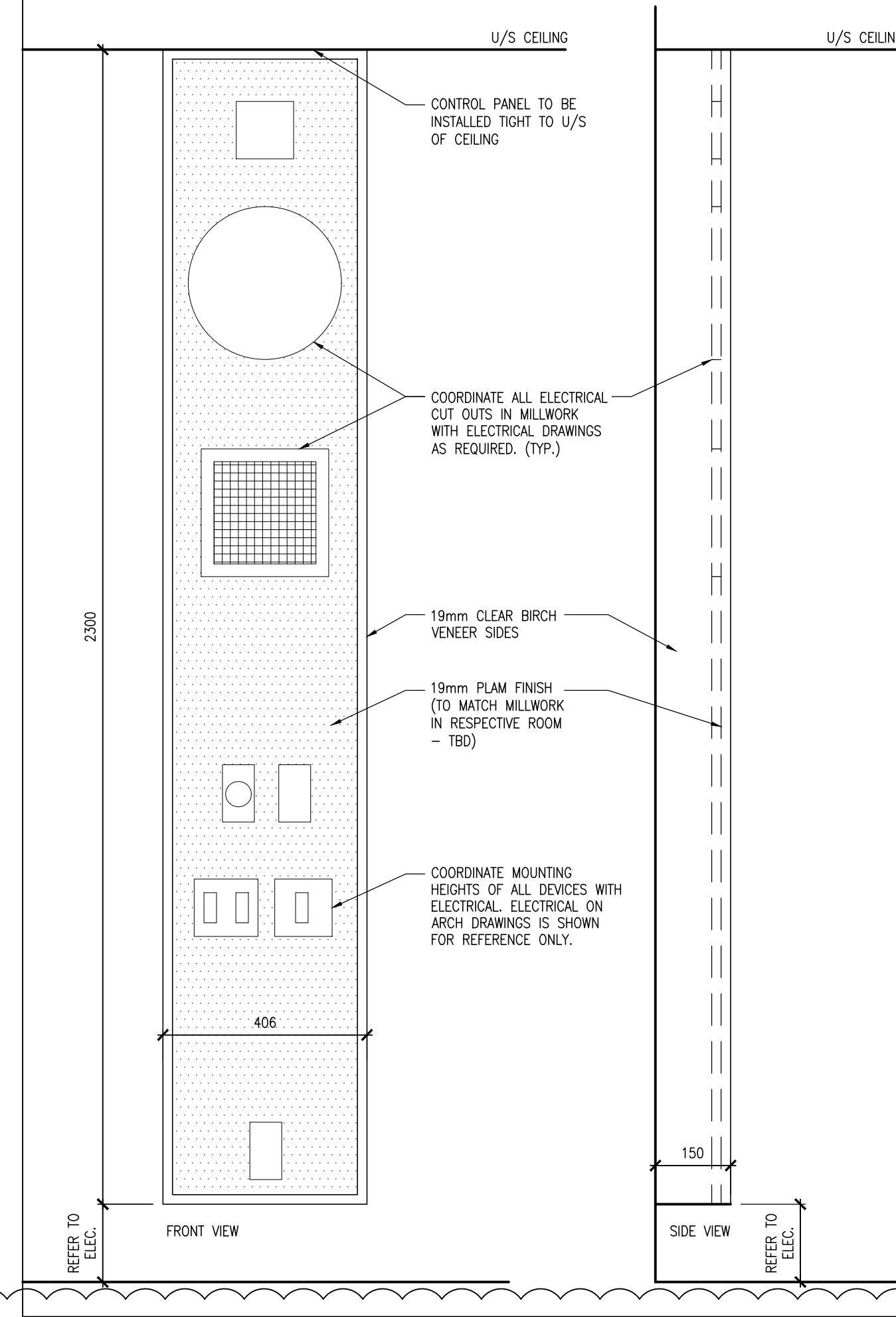
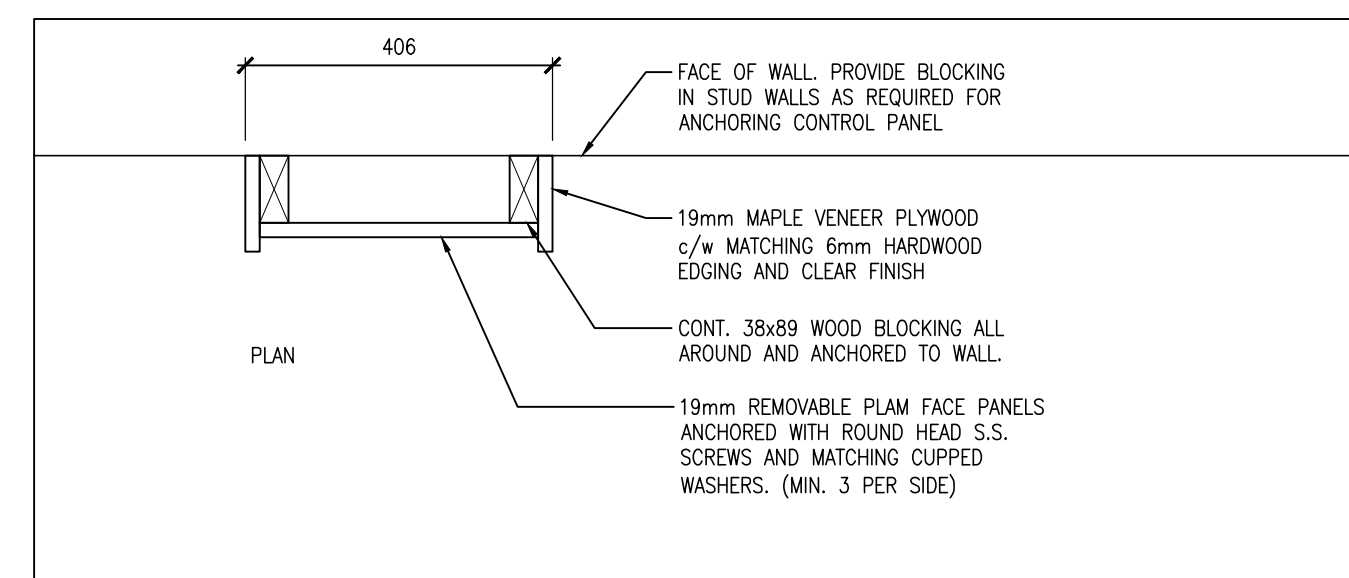
Quality is our primary focus at Interspec Systems. We implement controls, efficiency standards, and operate with precision to satisfy our client's expectations internationally. We are a registered ISO 9001:2015 compliant company.



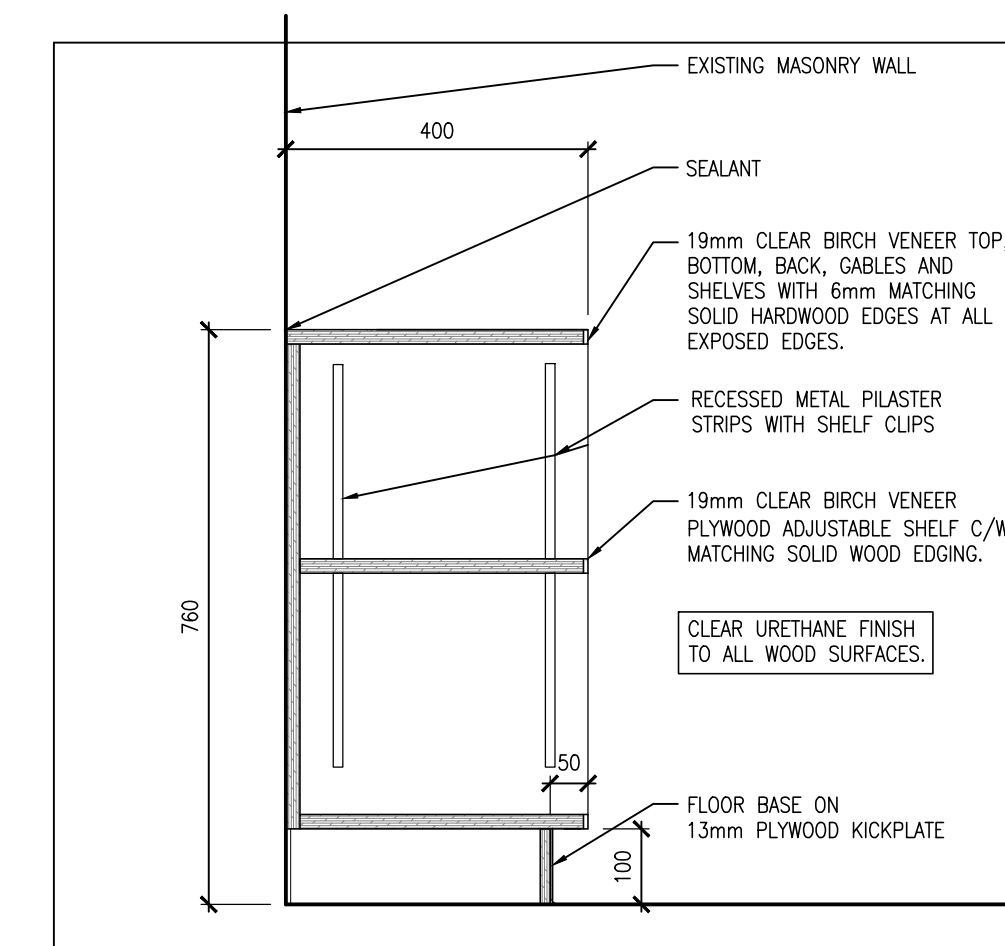
CONNECT WITH US

1-866-888-8981 info@interspecsystems.com www.interspecsystems.com
995841 Mono/Adjala Townline, RR1 Rosemont ON, Canada L0N 1R0

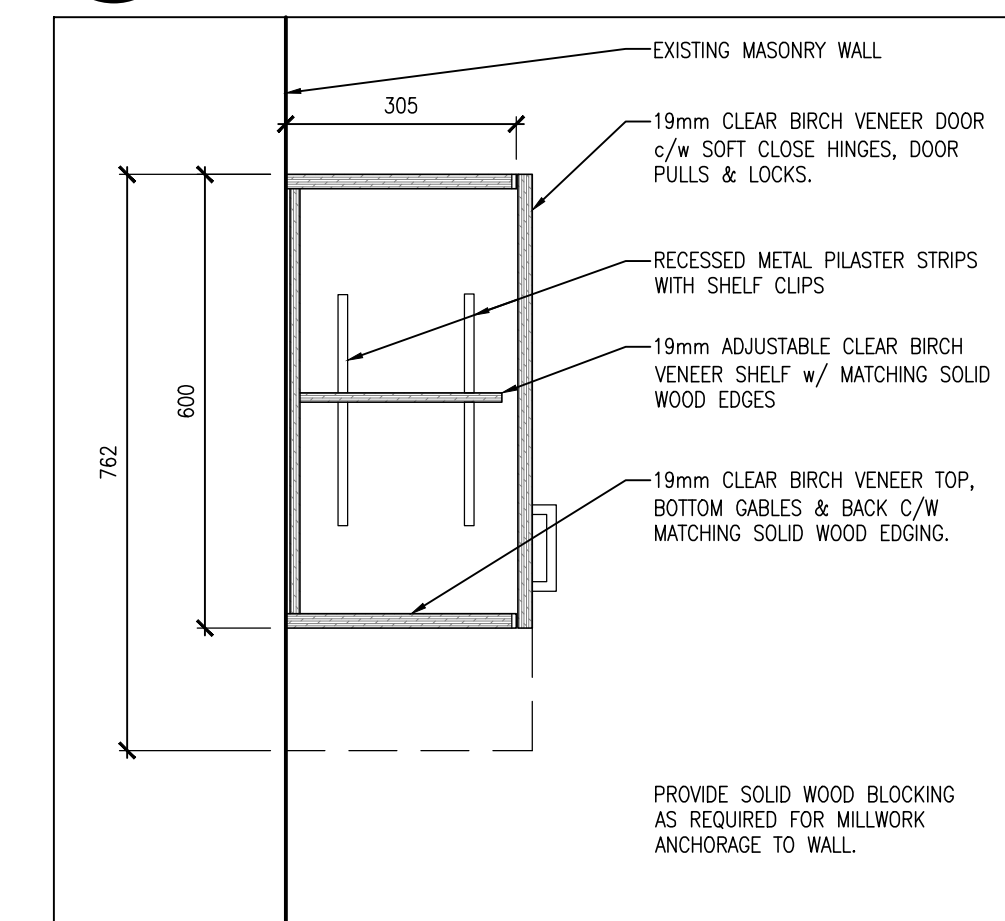
Alspec Industries and Interspec Systems are wholly owned subsidiaries of Aereus Technologies.



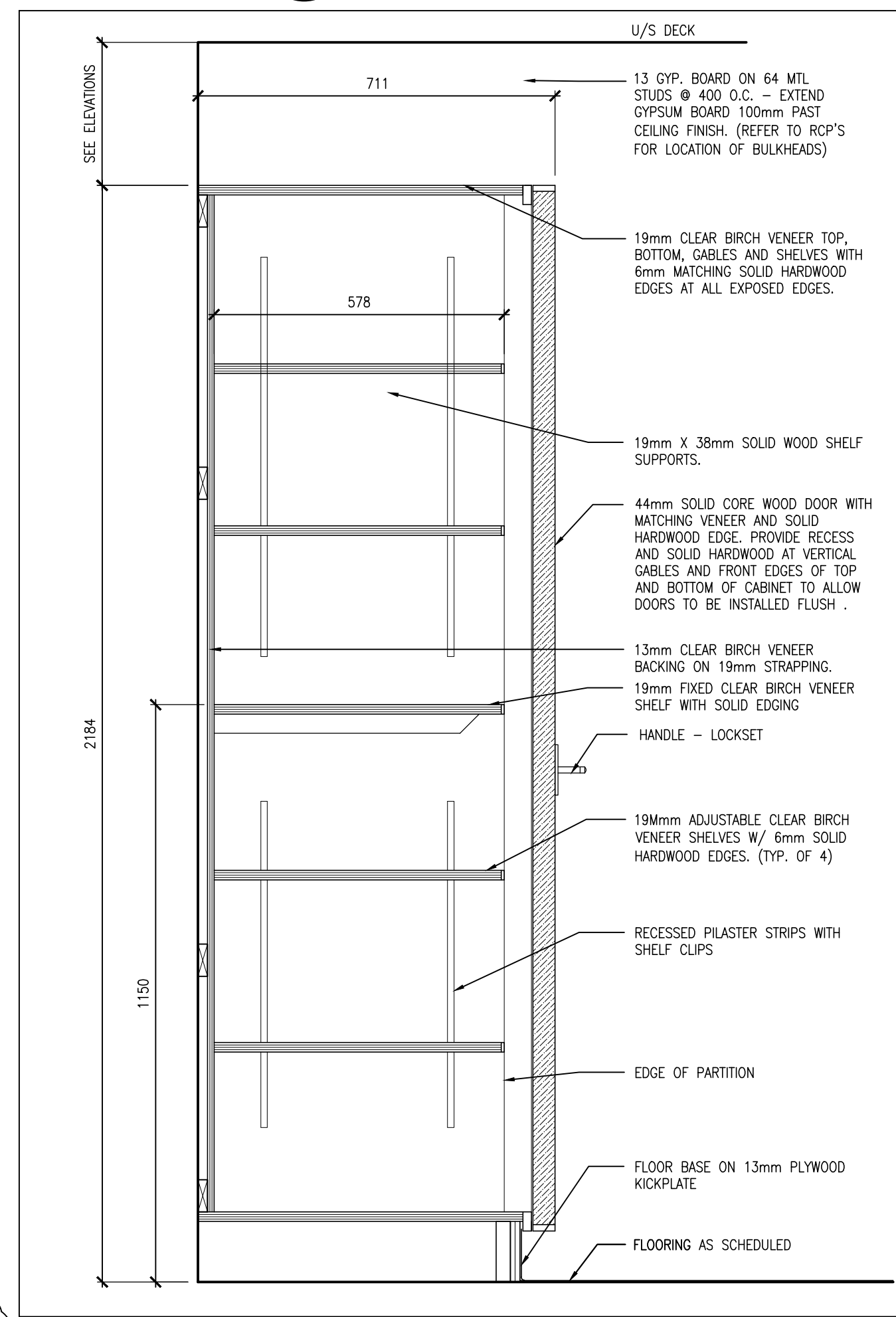
5
A802 CONTROL PANEL PLAN, SECTION AND ELEVATION
1:10



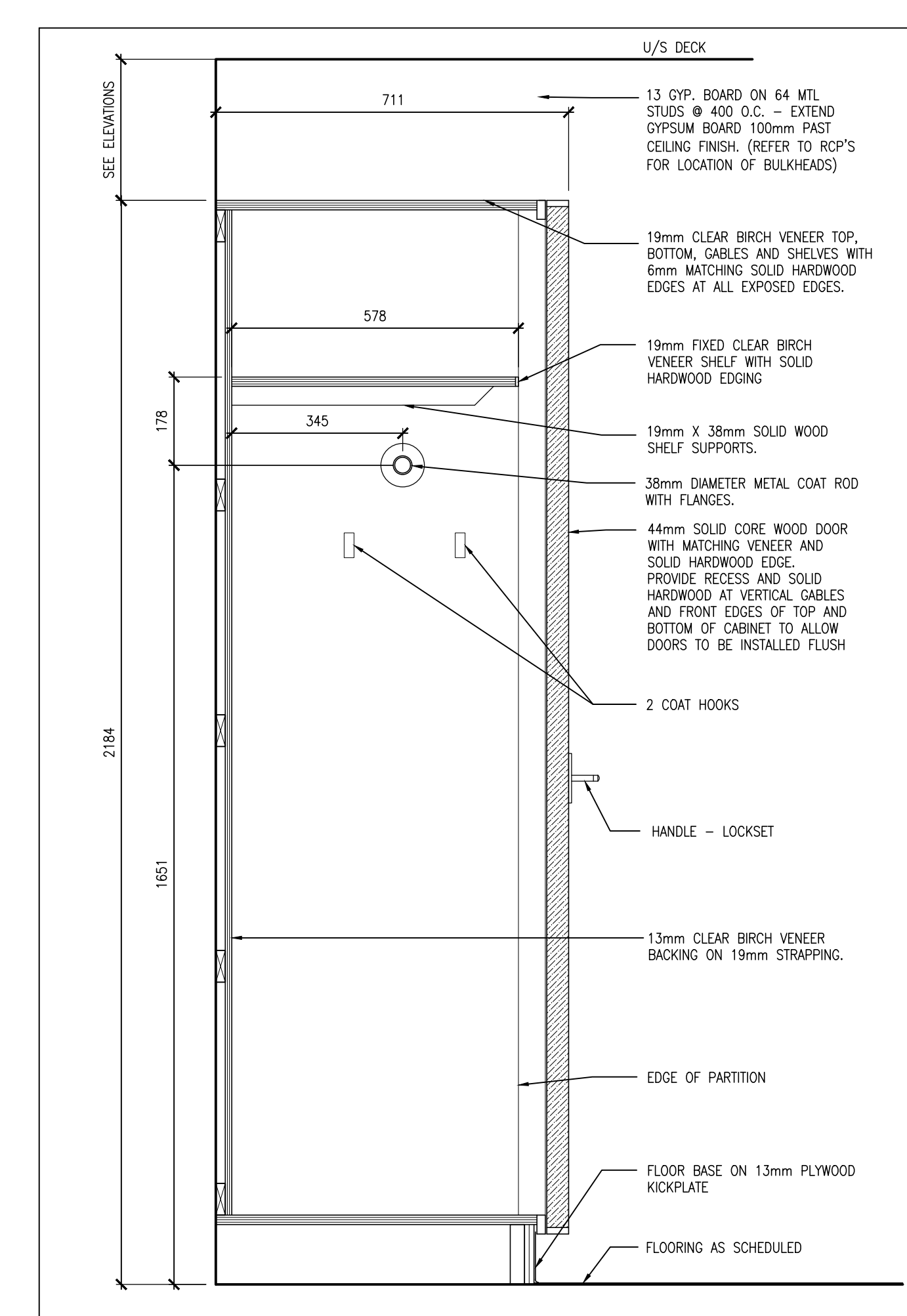
5
A802 SHELVES - SECTION
1:10



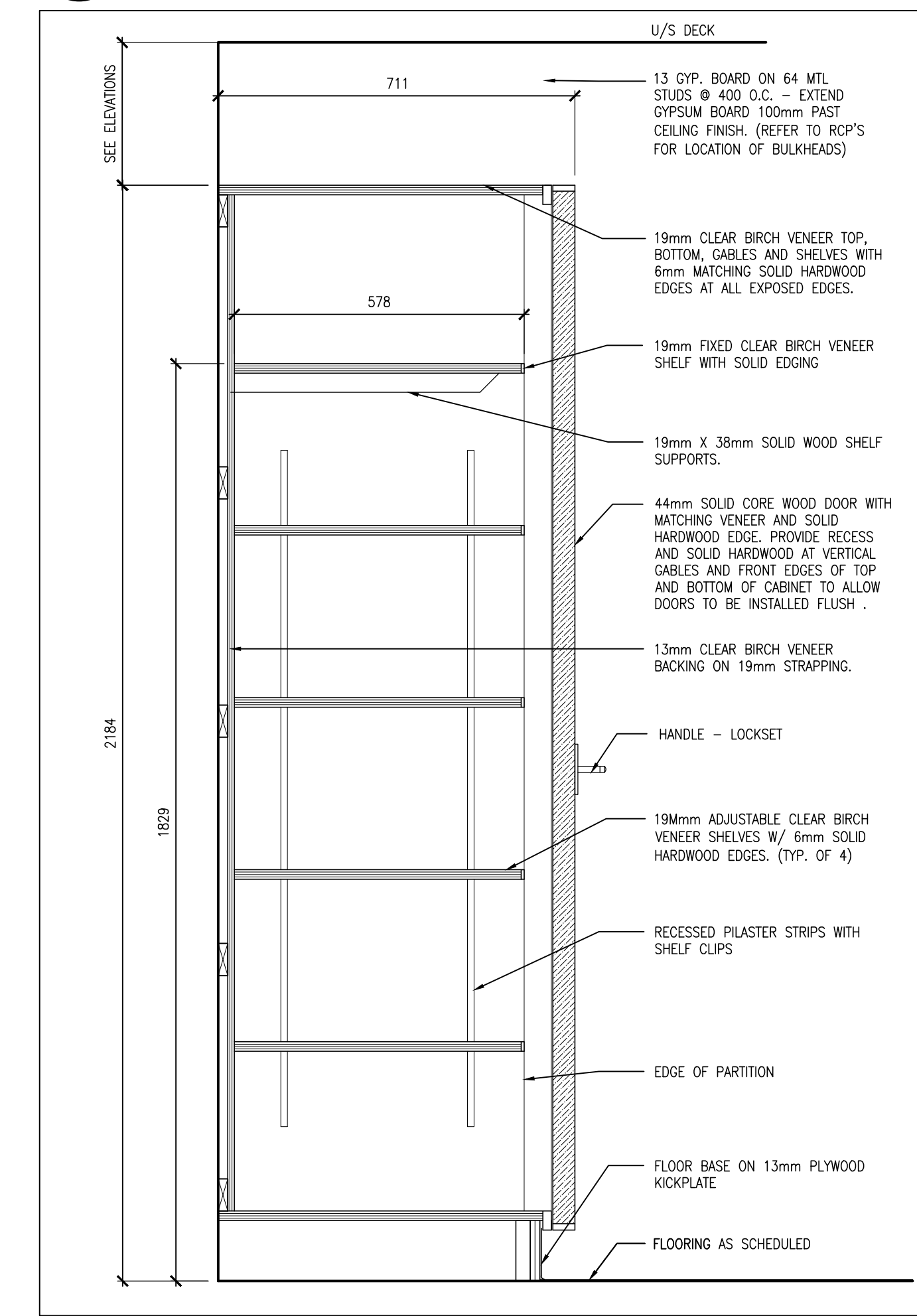
4
A802 UPPER CABINET - SECTION
1:10



3
A802 STORAGE CABINET ML3 - SECTION
1:10



2
A802 TEACHERS CABINET ML2 - SECTION
1:10



1
A802 TEACHERS CABINET ML2 - SECTION
1:10

DO NOT SCALE THE DRAWINGS.
CHECK AND VERIFY ALL DIMENSIONS AT THE SITE.
ALL DRAWINGS, SPECIFICATIONS AND RELATED DOCUMENTS ARE THE COPYRIGHT PROPERTY OF THE CONSULTANT AND MUST BE RETURNED UPON REQUEST. REPRODUCTION OF DRAWINGS IN PART OR WHOLE WITHOUT THE PERMISSION OF THE CONSULTANT IS FORBIDDEN.
DRAWINGS ARE NOT TO BE USED FOR CONSTRUCTION UNTIL SIGNED AND SEALED BY THE CONSULTANT.



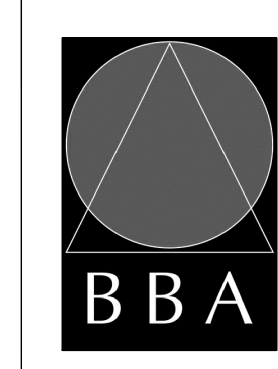
NO.	ISSUES	DATE	BY
1	ISSUED FOR TENDER	MAR. 13, 2024	BBA

NO.	REVISIONS	DATE	BY
1	ADDENDUM #1	APRIL 4, 2024	BBA

PROJECT:
GRAFTON PUBLIC SCHOOL INTERIOR RENOVATIONS

654 Station Road, Colborne, ON
KPRDSB - GRAFTON PUBLIC SCHOOL

DRAWING:
MILLWORK DETAILS



BARRY BRYAN ASSOCIATES
Architects
Engineers
Project Managers
250 Water Street
Suite 201
Whitby, Ontario
L1N 0G5
Tel: (905) 666-6252
Fax: (905) 666-6256
e-mail: bba@bba-archeng.com

DESIGN BY: BBA	DOC. CONTROL DATE:
DRAWN BY: CM	% COMPLETE:
CHECKED BY:	INITIAL:
DATE: JAN. 2024	SCALE: AS NOTED
FILE:	

PROJECT NO:
24006

DRAWING NO:
A802