

KAWARTHA PINE RIDGE DISTRICT SCHOOL BOARD
PUR24-069-ITT
Grafton Public School Classroom upgrades

ADDENDUM NO. 6

This addendum shall form an integral part of the bid documents for the above noted Bid and shall be read in conjunction therewith. This addendum shall, however, take precedence over all requirements as it pertains to the particular and specific items noted below.

ADDITIONAL INFORMATION

Add: Reconfiguration of Three (3) Open Concept Classrooms at Grafton PS, Project 24006, Addendum No. 2, prepared by Barry Bryan Associates, (4 pages)

END OF ADDENDUM NO. 6



**BARRY BRYAN
ASSOCIATES**

Architects
Engineers
Project Managers

Project No.: 24006
Date: April 16, 2024
Tender No.: PUR24-069-ITT
Project: **RECONFIGURATION OF THREE (3) OPEN
CONCEPT CLASSROOMS AT GRAFTON PS
Kawartha Pine Ridge District School Board**

The following information supplements and/or supersedes the bid documents issued on March 26, 2024

This Addendum forms part of the contract documents and is to be read, interpreted, and coordinated with all other parts. The cost of all contained herein is to be included in the contract sum. The following revisions supersede the information contained in the original drawings and specifications issued for the above-named project to the extent referenced and shall become part thereof. Acknowledge receipt of this Addendum by inserting its number and date on the Tender Form. Failure to do so may subject bidder to disqualification.

DRAWINGS

2.1 ARCHITECTURAL DRAWINGS SHEET A202

Add Note 12: The school's IT department will be responsible for removing the server and associated equipment but the contractor is to move the sever rack from the existing server room to its new location. The contractor should secure/bolt the rack to the existing floor in its new location. The contractor is to re-route Bell fibre (and other network cables) from the existing server room to rack in its new location. The contractor is to move the cables and the rack simultaneously if possible.

2.2 ARCHITECTURAL DRAWINGS SHEET A204

The new wall between classrooms and the newly created corridor are to extend to the underside of the existing roof deck to maintain the required fire separation/ratings. Refer to updated Partition and Furring Types.

GENERAL

2.3 Add Cash allowance of \$25,000 for coordinating the relocation of server and associated services to new location. Refer to Bid Documents

End of Addendum No. 2

Barry Bryan Associates

Architects, Engineers, Project Managers

Lorraine Okungbowa, Intern Architect

LO/vl

Attachments: Architectural Drawing sheet A202 (1 Page)
Architectural Drawing sheet A204 (1 Page)



250 Water Street,
Suite 201
Whitby, Ontario
Canada
L1N 0G5

Tele: 905-666-5252

Fax: 905-666-5256

Email: bba@bba-archeng.com

www.bba-archeng.com

I/We hereby acknowledge receipt of this Addendum.

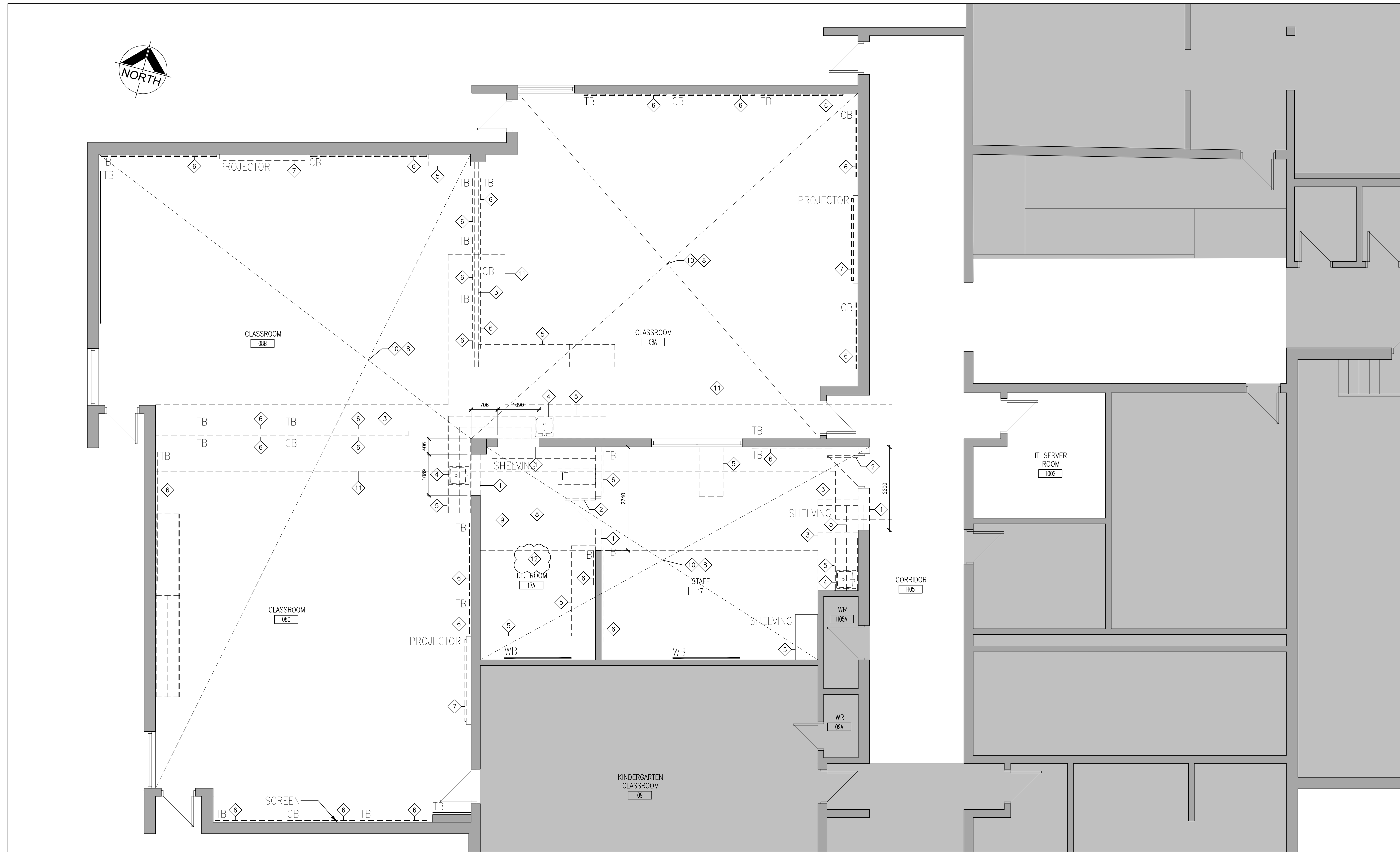
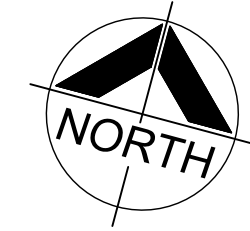
Signature (signing officer of firm)

Position

Name of Firm

One copy of the addendum must be signed and returned with the completed tender, or the tender submitted shall be rejected.



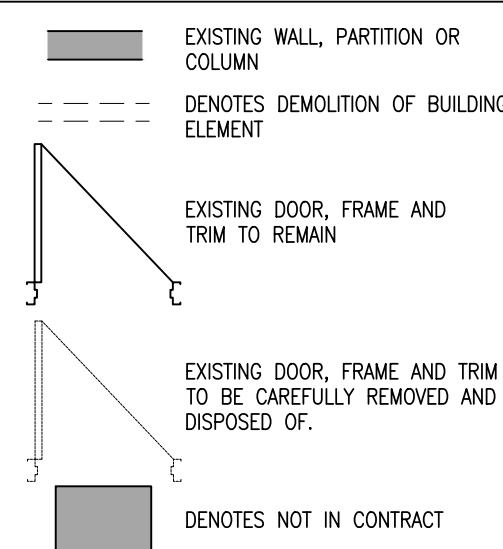


1 PART FIRST FLOOR DEMOLITION PLAN
A202 1:50

GENERAL DEMOLITION NOTES

1. SITE VERIFY ALL DIMENSIONS AND CONDITIONS.
2. ALL WORK TO BE IN ACCORDANCE WITH THE ONTARIO BUILDING CODE.
3. COMPLY WITH THE OCCUPATIONAL HEALTH AND SAFETY ACT REGULATIONS FOR CONSTRUCTION PROJECTS.
4. PROVIDE PROTECTION IN LOCATIONS APPROVED BY THE OWNER AND CONSULTANT SO AS NOT TO DAMAGE EXISTING STRUCTURE, LANDSCAPE OR PART THEREOF.
5. COMPLETE ALL DEMOLITION WORK NECESSARY TO COMPLETE THE RENOVATIONS AS SHOWN AND AS REQUIRED. DEMOLITION OF BUILDING ELEMENTS INCLUDES BUT NOT LIMITED TO COMPLETE REMOVAL OF ALL ASSOCIATED FIXTURES, FITTINGS, HARDWARE, FASTENERS, EQUIPMENT AND ACCESSORIES UNLESS NOTED OTHERWISE.
6. PROVIDE ALL SHORING AS REQUIRED. SHORING SHALL BE DESIGNED BY A REGISTERED PROFESSIONAL ENGINEER.
7. NOTIFY CONSULTANT OF LOAD BEARING MEMBERS OR ASSEMBLIES IDENTIFIED OR DISCOVERED DURING WORK AND NOT INDICATED ON DRAWINGS. DO NOT PROCEED WITH REMOVALS WITHOUT PRIOR REVIEW BY THE CONSULTANT.
8. PROVIDE TEMPORARY SUPPORT OF PIPES, DUCTS AND ELECTRICAL CHASES AS REQUIRED FOR SAFE REMOVAL. EXISTING AND PROPOSED SUPPORTS ARE TO BE REVIEWED BY THE CONSULTANT PRIOR TO THE REMOVAL OF ANY COMPONENTS WHICH MAY FALL OR CAUSE OTHERS TO FALL.
9. MAINTAIN ALL WORK AREAS AND ALL STORAGE AREAS CLEAN AND ORDERLY AT ALL TIMES INCLUDING EXISTING AREAS THAT REMAIN IN OPERATION DURING CONSTRUCTION. DUST CONTROL MEASURES ARE TO BE IN PLACE AT ALL TIMES AND NOISY WORK SHALL BE COORDINATED AROUND PROGRAM EVENTS.
10. REMOVAL OF EXISTING FLOOR FINISHES IS TO INCLUDE COMPLETE REMOVAL OF BASE AND ALL MORTAR AND ADHESIVES AND PREPARATION OF EXISTING SUBSTRATES TO RECEIVE NEW FLOORING, SATISFACTORY TO THE MANUFACTURER OF NEW FLOOR FINISHES. ALLOW FOR EXCESSIVE LEVELING OF SLABS.
11. DEMOLITION INCLUDES ALL ASSOCIATED MECHANICAL AND ELECTRICAL SERVICES, EQUIPMENT, FITTINGS, FIXTURES, HANGERS, BRACKETS, TRIM AND ACCESSORIES AS REQUIRED TO COMPLETE THE WORK.
12. MAINTAIN EXISTING FIRE HOSE CABINETS AND FIRE RATINGS.
13. MAINTAIN EXISTING FIRE HOSE CABINETS AND FIRE RATINGS.
14. REMOVAL OF DOORS AND FRAMES IS TO INCLUDE REMOVAL OF ALL HARDWARE.
15. REMOVAL ALL PROTRUSIONS IN FLOOR SLAB AND GRIND DOWN TO FLOOR LEVEL.
16. CLEAN, PATCH / REPAIR ALL EXISTING SURFACES TO REMAIN TO RECEIVE NEW FINISHES. ALLOW FOR REMOVAL OR SCARIFICATION OF EXISTING PAINT FINISH ON WALLS THAT ARE TO RECEIVE NEW WALL TILE FINISH. REMOVE ALL MORTAR, ADHESIVES AND RUST AS REQUIRED TO PREPARE EXISTING SUBSTRATES TO RECEIVE NEW PAINT FINISHES.
17. DISCONNECT AND CAP OFF ALL SERVICES PRIOR TO DEMOLITION.
18. DISPOSE OF MATERIALS OFF SITE.
19. CONTRACTOR SHALL BE RESPONSIBLE FOR ANY DAMAGE TO THE EXISTING STRUCTURE OR FINISHES SHOWN TO REMAIN AND REPAIR / REPLACE SAME TO THE SATISFACTION OF THE OWNER AND CONSULTANT.
20. BUILDING TO BE SECURED BY THE G.C. AT ALL TIMES.
21. REFER TO THE HAZARDOUS BUILDING MATERIALS ASSESSMENT REPORT.

DEMOLITION LEGEND



DEMOLITION NOTES

1. REMOVE AND DISPOSE OF EXISTING MASONRY PARTITION TO EXTENT SHOWN AND AS REQUIRED TO COMPLETE NEW WORK. PATCH, REPAIR AND MAKE GOOD ALL SURFACES.
2. REMOVE AND DISPOSE OF EXISTING DOOR & FRAME. PATCH, REPAIR AND MAKE GOOD ALL AFFECTED SURFACES.
3. REMOVE AND DISPOSE OF EXISTING PARTITION. PATCH, REPAIR AND MAKE GOOD ALL SURFACES.
4. REMOVE AND DISPOSE OF EXISTING PLUMBING FIXTURE. DISCONNECT AND CAP ALL SERVICES PRIOR TO DEMOLITION. PREPARE AREAS TO RECEIVE NEW FIXTURE. REFER TO NEW PLANS AND MECHANICAL DRAWINGS.
5. REMOVE AND DISPOSE OF EXISTING MILLWORK TO EXTENT SHOWN AND AS REQUIRED TO COMPLETE NEW WORK. PATCH, REPAIR AND MAKE GOOD ALL SURFACES.
6. REMOVE AND DISPOSE OF ALL WALL MOUNTED BOARDS, (CHALK BOARDS & TACK BOARDS). MAKE GOOD AFFECTED AREA.
7. REMOVE EXISTING SMART BOARD AND ALL ASSOCIATED ELECTRICAL.
8. REMOVE EXISTING FURNITURES AND HANDOVER TO OWNER.
9. REMOVE AND RELOCATE EXISTING SHELVING.
10. REMOVE AND DISPOSE OF EXISTING VCT FLOOR TILE AND RUBBER WALL BASE. PREPARE EXISTING SURFACES TO RECEIVE NEW FLOORING AND BASE AS SCHEDULED.
11. REMOVE CONCRETE FLOOR AND PROVIDE TRENCHING. REFER TO MECHANICAL. REPAIR FLOOR AT LOCATION WHERE PIPING HAD PENETRATED FLOOR. PATCH, REPAIR, AND MAKE GOOD AFFECTED SURFACES AS REQUIRED FOR NEW WORK.
12. THE SCHOOL'S IT DEPARTMENT WILL BE RESPONSIBLE FOR REMOVING THE SERVER AND ASSOCIATED EQUIPMENT BUT THE CONTRACTOR IS TO MOVE THE SERVER RACK FROM THE EXISTING SERVER ROOM TO ITS NEW LOCATION. THE CONTRACTOR IS TO RE-ROUTE BELL FIBRE (AND OTHER NETWORK CABLES) FROM THE EXISTING SERVER ROOM TO RACK IN ITS NEW LOCATION. THE CONTRACTOR IS TO MOVE THE CABLES AND THE RACK SIMULTANEOUSLY IF POSSIBLE.

DO NOT SCALE THE DRAWINGS.
CHECK AND VERIFY ALL DIMENSIONS AT THE SITE.
ALL DRAWINGS, SPECIFICATIONS AND RELATED DOCUMENTS ARE THE COPYRIGHT PROPERTY OF THE CONSULTANT AND MUST BE RETURNED UPON REQUEST. REPRODUCTION OF DRAWINGS IN PART OR WHOLE WITHOUT THE PERMISSION OF THE CONSULTANT IS FORBIDDEN.
DRAWINGS ARE NOT TO BE USED FOR CONSTRUCTION UNTIL SIGNED AND SEALED BY THE CONSULTANT.



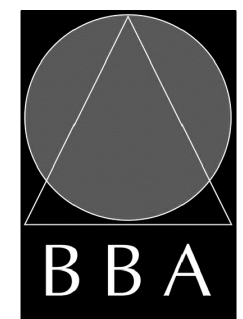
NO.	ISSUES	DATE	BY
1	ISSUED FOR TENDER	MAR. 13, 2024	BBA

NO.	REVISIONS	DATE	BY
1	ADDENDUM #2	APRIL 16, 2024	BBA

PROJECT:
GRAFTON PUBLIC SCHOOL INTERIOR RENOVATIONS

654 Station Road, Colborne, ON
KPRDSB - GRAPTON PUBLIC SCHOOL

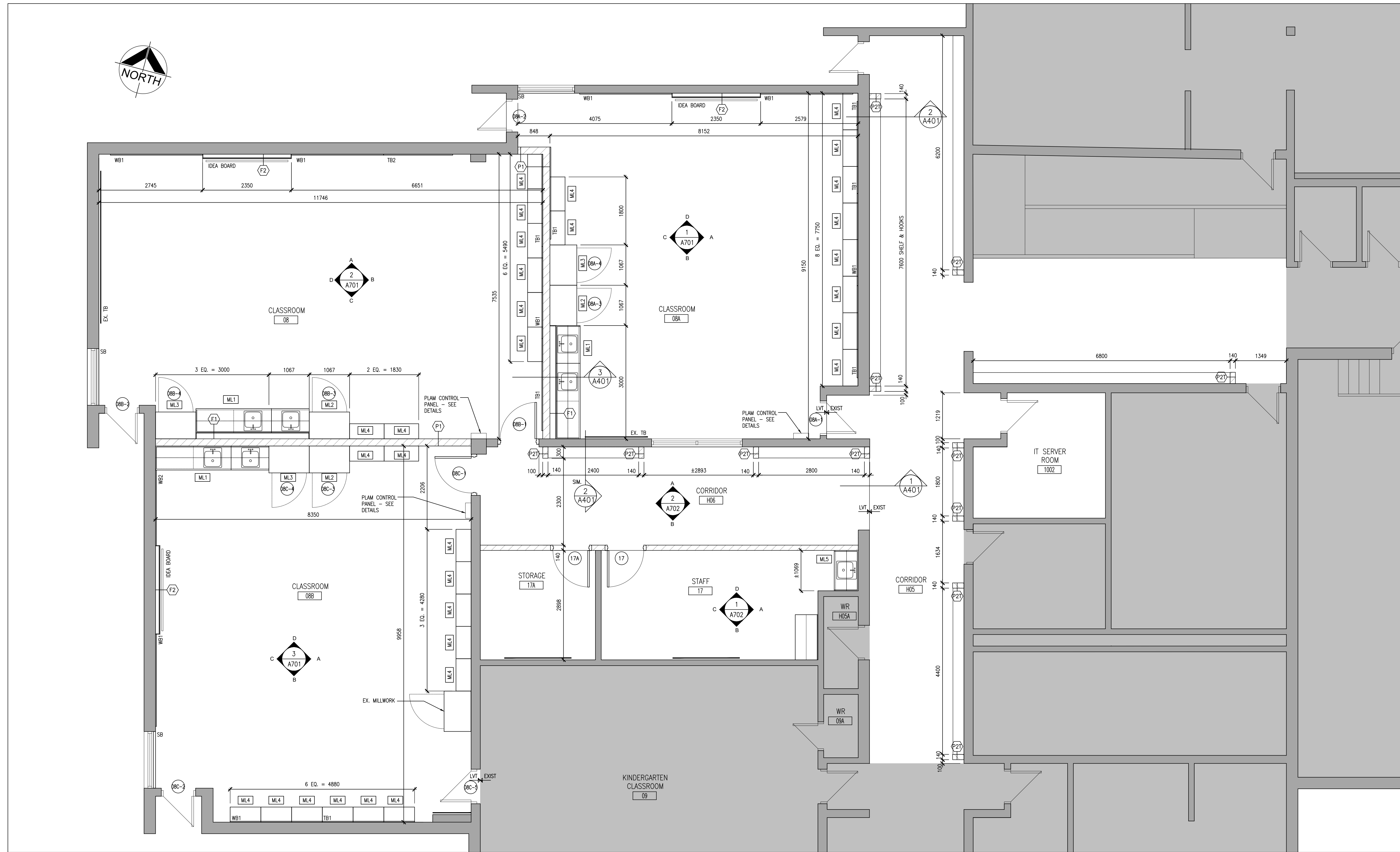
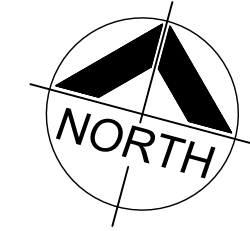
DRAWING:
PART FIRST FLOOR DEMOLITION PLAN



BARRY BRYAN ASSOCIATES
Architects
Engineers
Project Managers
250 Water Street
Suite 201
Whitby, Ontario
L1N 0G5
Tel: (905) 666-6252
Fax: (905) 666-6256
e-mail: bba@bba-archeng.com

DESIGN BY: BBA	DOC CONTROL: DATE:
DRAWN BY: CM	% COMPLETE:
CHECKED BY:	INITIAL:
DATE: NOV. 2023	SCALE: AS NOTED
FILE: P23-418 A201.DWG	

PROJECT NO: **24006** DRAWING NO: **A202**



1 PART FIRST FLOOR PLAN
A204 1:50

FLOOR PLAN NOTATION LEGEND

CORRIDOR	ROOM NAME & NUMBER	BARRIER FREE DOOR OPERATOR PUSH BUTTON	INTERIOR ELEVATION REFERENCE NUMBER
EXTERIOR WALL TYPE	PUSH TO LOCK PUSH BUTTON	EMERGENCY ASSISTANCE CALL BUTTON	FIRE RESISTANCE RATING
INTERIOR PARTITION OR FURRING TYPE	DOOR WITH DOOR OPERATOR	FIRE EXTINGUISHER	FIRE EXTINGUISHER CABINET
EXTERIOR GLAZING NUMBER	WALL SECTION REFERENCE	WHITEBOARD - REFER TO ELEVATIONS FOR SIZING & QUANTITIES	
INTERIOR GLAZED SCREEN NUMBER	BUILDING SECTION/ EXTERIOR ELEVATION REFERENCE		
DOOR NUMBER			
MILLWORK NUMBER			

PARTITION & FURRING TYPES

190mm CONCRETE BLOCK to U/S OF DECK ~3708mm
140mm CONCRETE BLOCK to U/S OF DECK ~3708mm
13mm GYPSUM BOARD 152mm STEEL STUDS @ 400mm O.C.
13mm GYPSUM BOARD 92mm STEEL STUDS @ 400mm O.C.

PARTITION & FURRING NOTES

- A "T" DESIGNATION (ie. "P6") INDICATES LOW PARTITION (+1500mm HIGH).
- UNLESS OTHERWISE NOTED, ALL PARTITIONS TERMINATE AT UNDERSIDE OF METAL ROOF DECK ABOVE.
- PROVIDE MOISTURE RESISTANT GYPSUM BOARD IN ALL WET AREAS. WET AREAS ARE DEFINED AS WASHROOMS, KITCHEN, VESTIBULES AND CUSTODIAN ROOMS.
- ALL GYPSUM BOARD BULKHEADS / PARTITIONS ABOVE WALL OPENINGS OR SCREENS TO BE BRACED AS REQUIRED.
- PROVIDE BLOCKING / REINFORCEMENT FOR THE INSTALLATION / ATTACHMENT OF ALL MILLWORK, CABINETRY, CHANGE TABLES, WASHROOM ACCESSORIES AND/OR FIXTURES & EQUIPMENT INCLUDING FUTURE OR N.I.C. ITEMS AS REQUIRED.

DO NOT SCALE THE DRAWINGS.
CHECK AND VERIFY ALL DIMENSIONS AT THE SITE.
ALL DRAWINGS, SPECIFICATIONS AND RELATED DOCUMENTS ARE THE COPYRIGHT PROPERTY OF THE CONSULTANT AND MUST BE RETURNED UPON REQUEST. REPRODUCTION OF DRAWINGS IN PART OR WHOLE WITHOUT THE PERMISSION OF THE CONSULTANT IS FORBIDDEN.
DRAWINGS ARE NOT TO BE USED FOR CONSTRUCTION UNTIL SIGNED AND SEALED BY THE CONSULTANT.



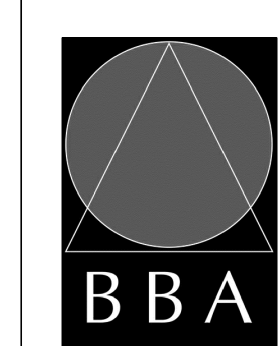
NO.	ISSUES	DATE	BY
1	ISSUED FOR TENDER	MAR. 13, 2024	BBA

NO.	REVISIONS	DATE	BY
1	ADDENDUM #2	APRIL 16, 2024	BBA

PROJECT:
GRAFTON PUBLIC SCHOOL INTERIOR RENOVATIONS

654 Station Road, Colborne, ON
KPRDSB - GRAPTON PUBLIC SCHOOL

DRAWING:
PART FIRST FLOOR PLAN



BARRY BRYAN ASSOCIATES Architects Engineers Project Managers 250 Water Street Suite 201 Whitby, Ontario L1N 0G5 Tel: (905) 666-6252 Fax: (905) 666-6256 e-mail: bba@bba-archeng.com	DESIGN BY: BBA DRAWN BY: CM CHECKED BY: - DATE: NOV. 2023 SCALE: 1:50 FILE:	DOC. CONTROL: DATE: % COMPLETE: INITIAL:
--------------------------------------------------------------------------------------------------------------------------------------------------------------------------------------------------------------------------	-----------------------------------------------------------------------------------------------------------	---------------------------------------------------

PROJECT NO: **24006** DRAWING NO: **A204**